

Table of Contents

General information.....	1
Operation modes.....	1
Drivers Installation.....	1
Software Installation.....	1
Software Activation (standalone BB5 Easy Service Tool dongle).....	2
Read dongle identification, serial number (S/N).....	3

General information

BB5 Easy Service Tool is a software for Nokia mobile phones servicing.

Infinity-Box corporate web site:	http://www.infinity-box.com/
BB5 Easy Service Tool web site:	http://www.infinity-best.com/
BB5 Easy Service Tool download area:	http://www.infinity-best.com/download/
Sales department e-mail:	sales@infinity-best.com
Technical support e-mail:	support@infinity-best.com

Operation modes

BB5 Easy Service Tool works in two modes:

- ✓ Standalone **BB5 Easy Service Tool** dongle
- ✓ Addon for Infinity-Box dongle (activation payment required), this option will be available in future.

Each operation mode has exactly the same functionality.

Drivers Installation

Protection dongle (smart-card) drivers should be installed.

1. Visit <http://www.infinity-box.com/support.php>
2. Download and install drivers according to **I. Installation procedure** section (it's need to install smart-card drivers only, Unibox/FTDI drivers is not required).

Software Installation

1. download software Installer: <http://www.infinity-best.com/download/>
2. Check installation options, press "Install" button
3. Wait several seconds
4. Finally you will see folder with software and Desktop shortcut

Software Activation (standalone BB5 Easy Service Tool dongle)

Software should be activated before use.

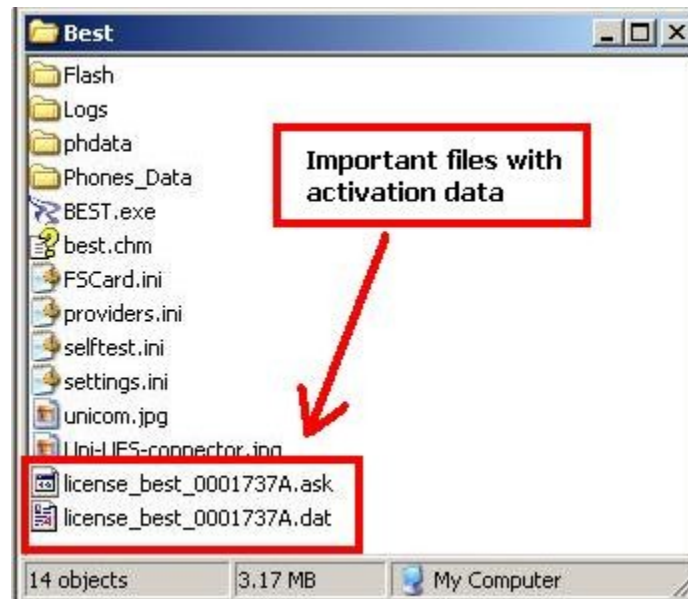
1. Run **BB5 Easy Service Tool** software
2. You will see activation request
3. Enter registration data (name and e-mail)
4. Click to "Ok" button
5. Software connect to activation server and generate required data
6. Wait some time and you will see the next message:



7. Activation done, activation files received from server and stored at your PC, software ready to work

NOTE !

To use this dongle on another PC after registration, you must copy activation files to other PC:



Read dongle identification, serial number (S/N)

In case of any problems with software and/or dongle functionality it is need to send information about your dongle identification data (serial number etc.) to support.

1. Download and run **Dongle Manager**: <http://www.infinity-box.com/support.php>
2. Select **BB5 Easy Service Tool** project and press "Read dongle serial number (S/N)" button